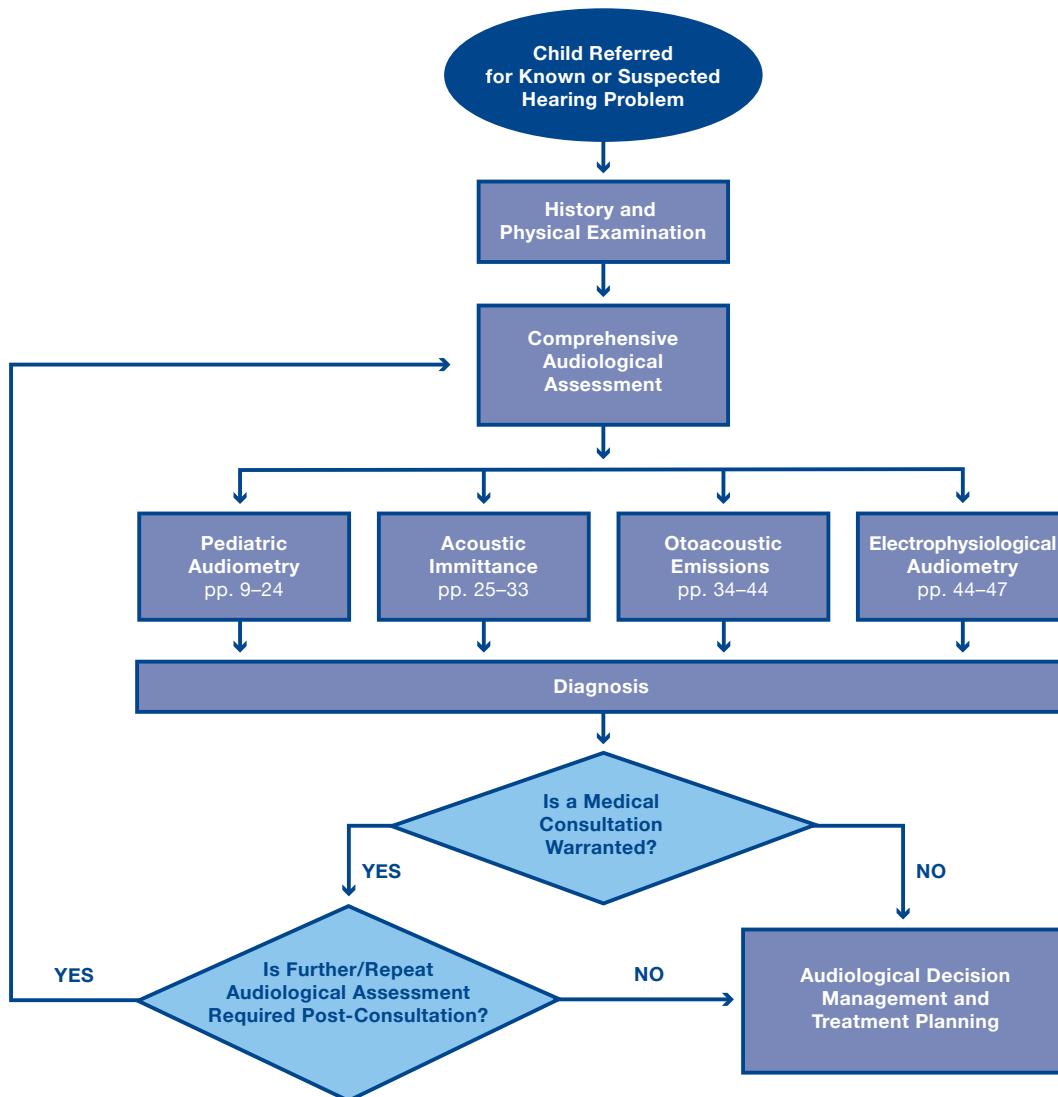


ALGORITHM—PEDIATRIC AUDIOLOGICAL ASSESSMENT

Based on 2020 *American Academy of Audiology Clinical Guidance Document: Assessment of Hearing in Infants and Young Children*

ALGORITHM CONTRIBUTORS: Katie M. Colella, AuD, CH-AP (Ann & Robert H. Lurie Children's Hospital of Chicago); Alexandra Madison, AuD (Ann & Robert H. Lurie Children's Hospital of Chicago); Susan Reynolds, AuD (Ann & Robert H. Lurie Children's Hospital of Chicago)



Page numbers refer to 2020 *American Academy of Audiology Clinical Guidance Document: Assessment of Hearing in Infants and Young Children*.

Reference

Cain SE, Gomes T, Leisner D, Lenzen N, Rall E, Schicke E, Uhler KM. (2020) American Academy of Audiology clinical guidance document: assessment of hearing in infants and young children. www.audiology.org/wp-content/uploads/2021/05/Clin-Guid-Doc_Assess_Hear_Infants_Children_1.23.20-1.pdf.