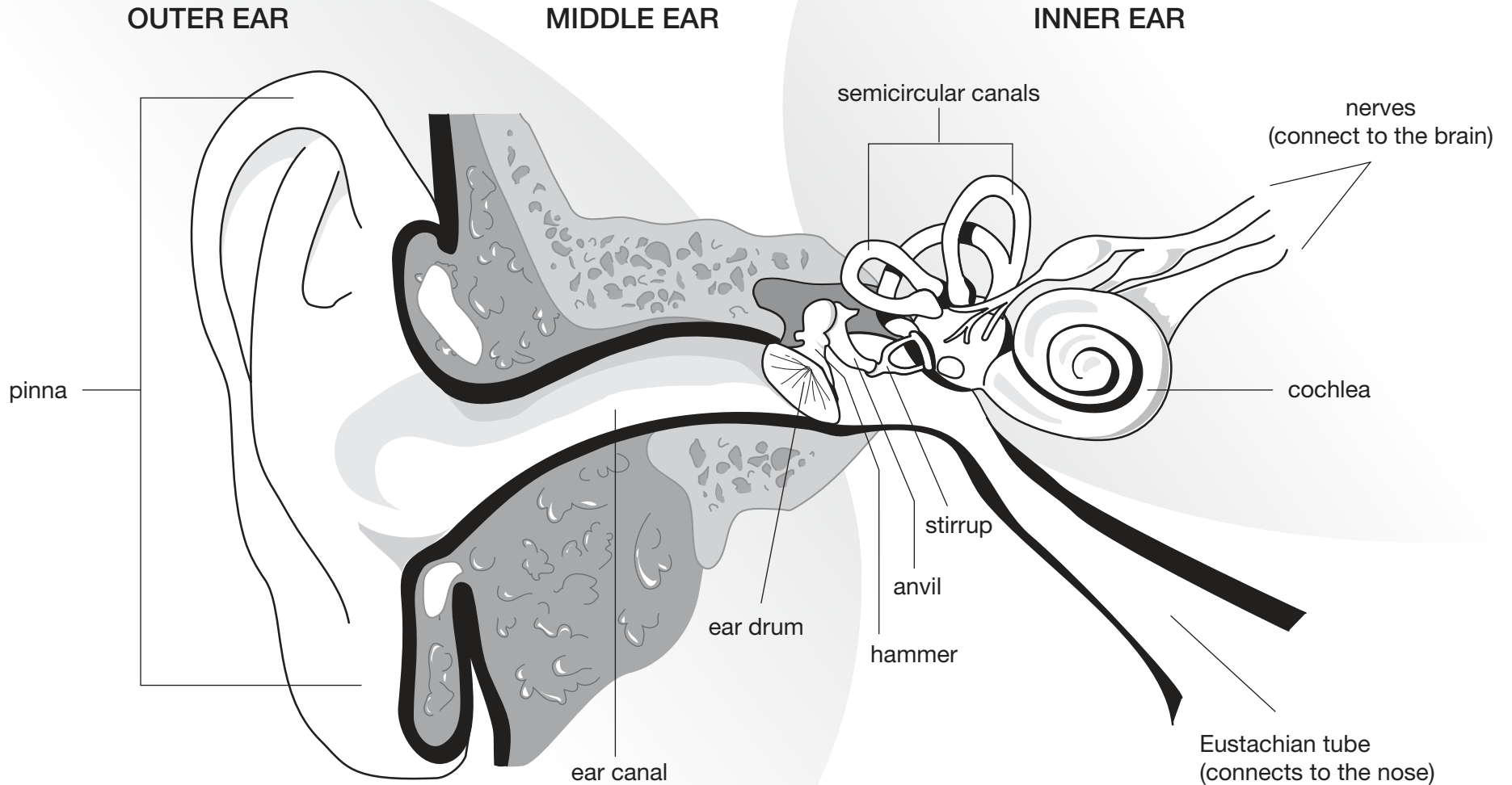


The Human Ear

Directions: Color in the diagram below using a different color for each part of the ear.



Protect your ears. If the noise is too loud, walk away, turn it down (*Turn it to the Left*), or use ear plugs.

LifeART image © 2008 Wolters Kluwer Health, Inc. — Lippincott Williams & Wilkins. All rights reserved

AMERICAN
ACADEMY OF
AUDIOLOGY

www.audiology.org



turn it to the left![®]

www.TurnItToTheLeft.com